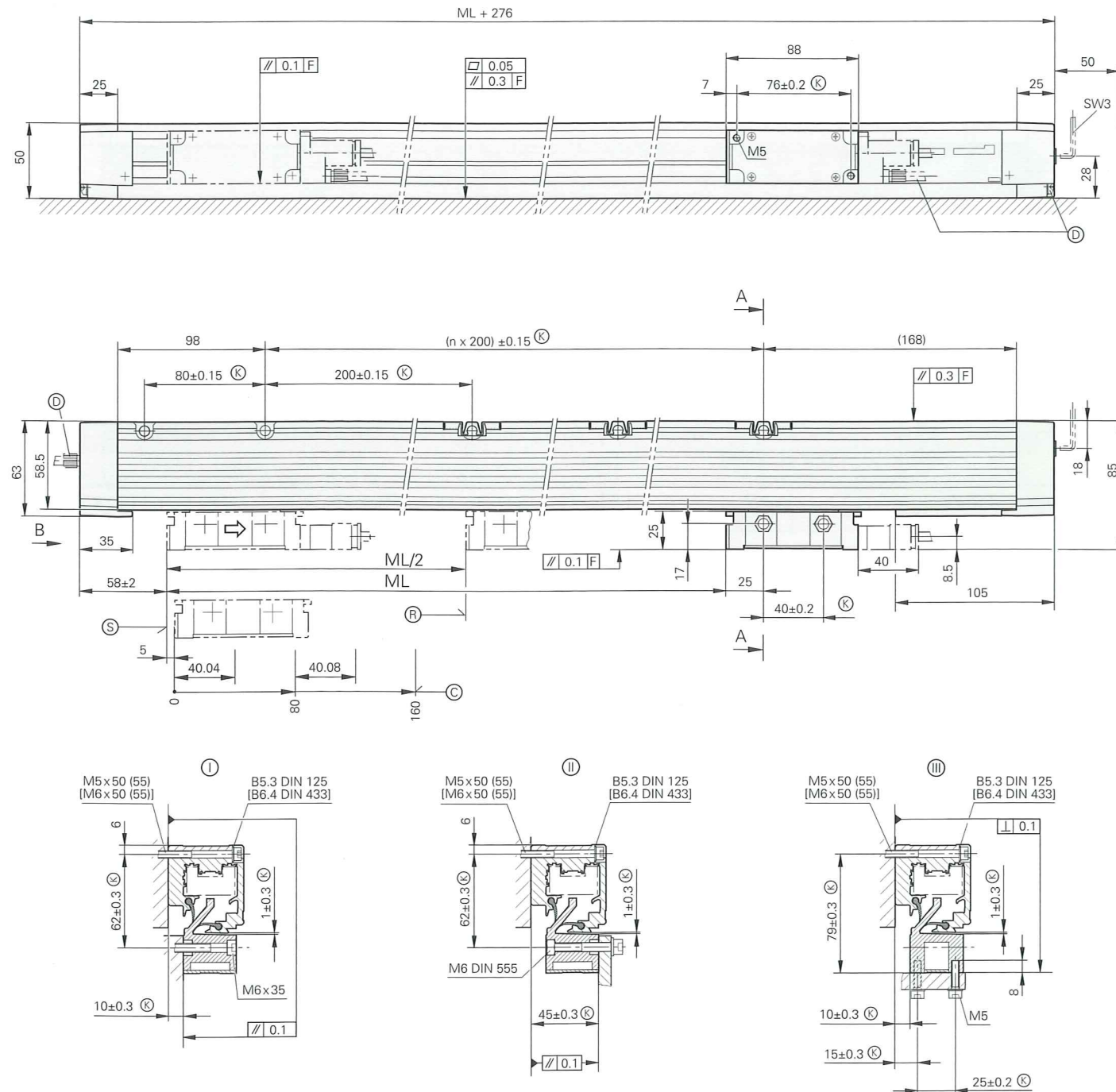


# LB 382 up to 3040 mm Measuring Length (Single-Section Housing)

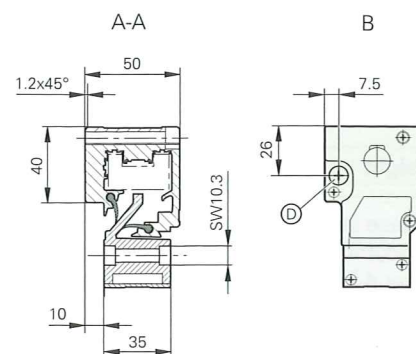
- Incremental linear encoder for measuring steps to 0.1 μm
- Horizontal mounting possible
- Mirror-image version available



Dimensions in mm

Tolerancing ISO 8015  
ISO 2768 - m H  
< 6 mm: ± 0.2 mm

- ⓪, Ⓜ, Ⓝ = Mounting options
- F = Machine guideway
- Ⓞ = Required mating dimensions
- Ⓢ = Compressed air inlet
- Ⓟ = Reference-mark position on LB 3x2
- Ⓠ = Reference-mark position on LB 3x2C
- Ⓡ = Beginning of measuring length (ML)
- ⇨ = Direction of scanning unit motion for output signals in accordance with interface description



Specifications	LB 382 up to ML 3040 mm
<b>Measuring standard</b> Expansion coefficient	Stainless steel tape with AURODUR graduation $\alpha_{\text{therm}} \approx 10 \times 10^{-6} \text{ K}^{-1}$
<b>Accuracy grade</b>	± 5 μm
<b>Measuring length ML* in mm</b>	Single-section housing 440 640 840 1040 1240 1440 1640 1840 2040 2240 2440 2640 2840 3040
<b>Reference marks*</b> LB 382 LB 382C	Selectable with selector plates every 50 mm, standard setting: 1 reference mark in the center Distance-coded
<b>Incremental signals</b>	~ 1 V <sub>PP</sub>
Grating period Signal period	40 μm 40 μm
Cutoff frequency -3dB	≥ 250 kHz
<b>Traversing speed</b>	≤ 120 m/min
<b>Power supply</b> without load	5V ± 5 % / < 150 mA
<b>Electrical connection</b>	Separate adapter cable (1 m/3 m/6 m/9 m) connectable to mounting block
<b>Cable length</b> <sup>1)</sup>	≤ 150 m
<b>Required moving force</b>	≤ 15 N
<b>Vibration</b> 55 to 2000 Hz <b>Shock</b> 11 ms <b>Acceleration</b>	≤ 300 m/s <sup>2</sup> (IEC 60068-2-6) ≤ 300 m/s <sup>2</sup> (IEC 60068-2-27) ≤ 60 m/s <sup>2</sup> in measuring direction
<b>Operating temperature</b>	0 °C to 50 °C
<b>Protection</b> IEC 60529	IP 53 when mounted according to the mounting instructions IP 64 if compressed air is connected via DA 300
<b>Weight</b>	1.3 kg + 3.6 kg/m measuring length

\* Please indicate when ordering

<sup>1)</sup> With HEIDENHAIN cable